

HIKVISION

Metadata integration solution

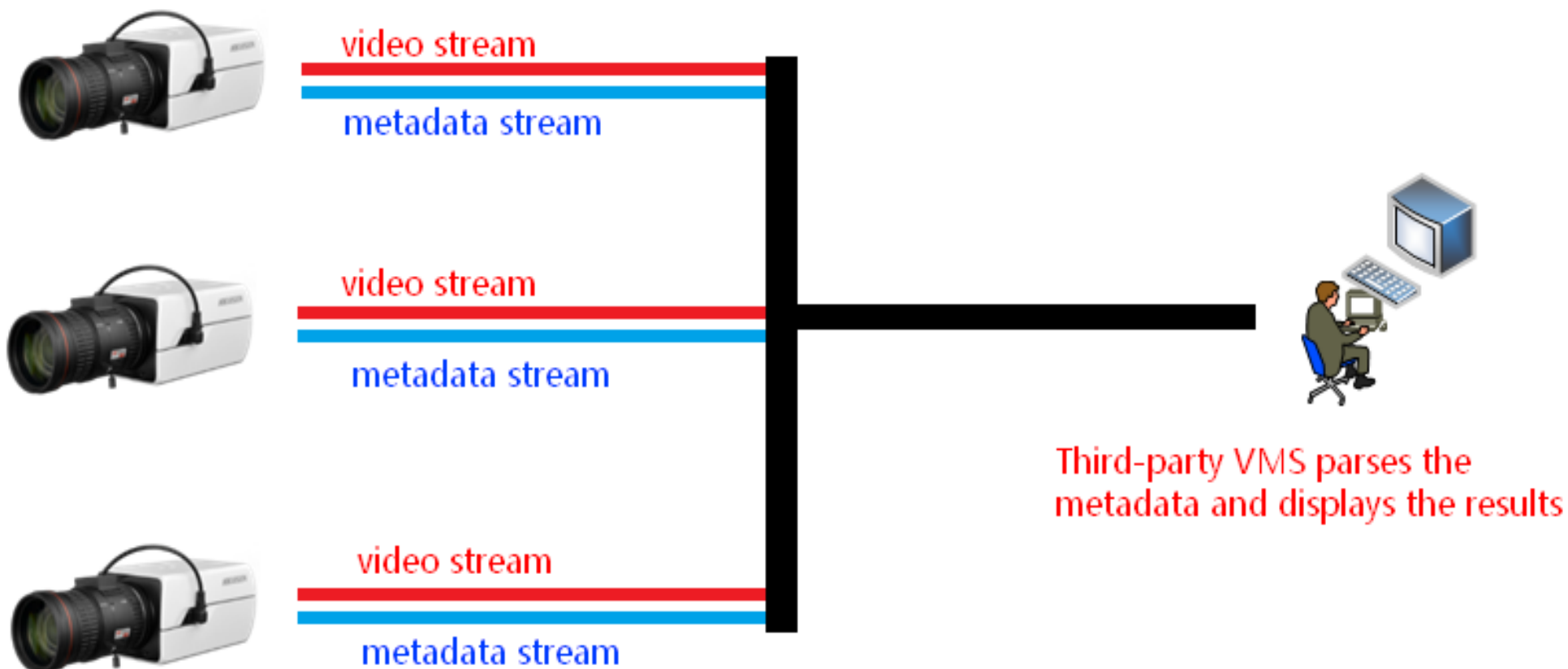
CONTENTS

- 01 | Metadata instruction & Integration method description
- 02 | Metadata typical scenario
- 03 | Feature and compatible product list



Metadata Instruction

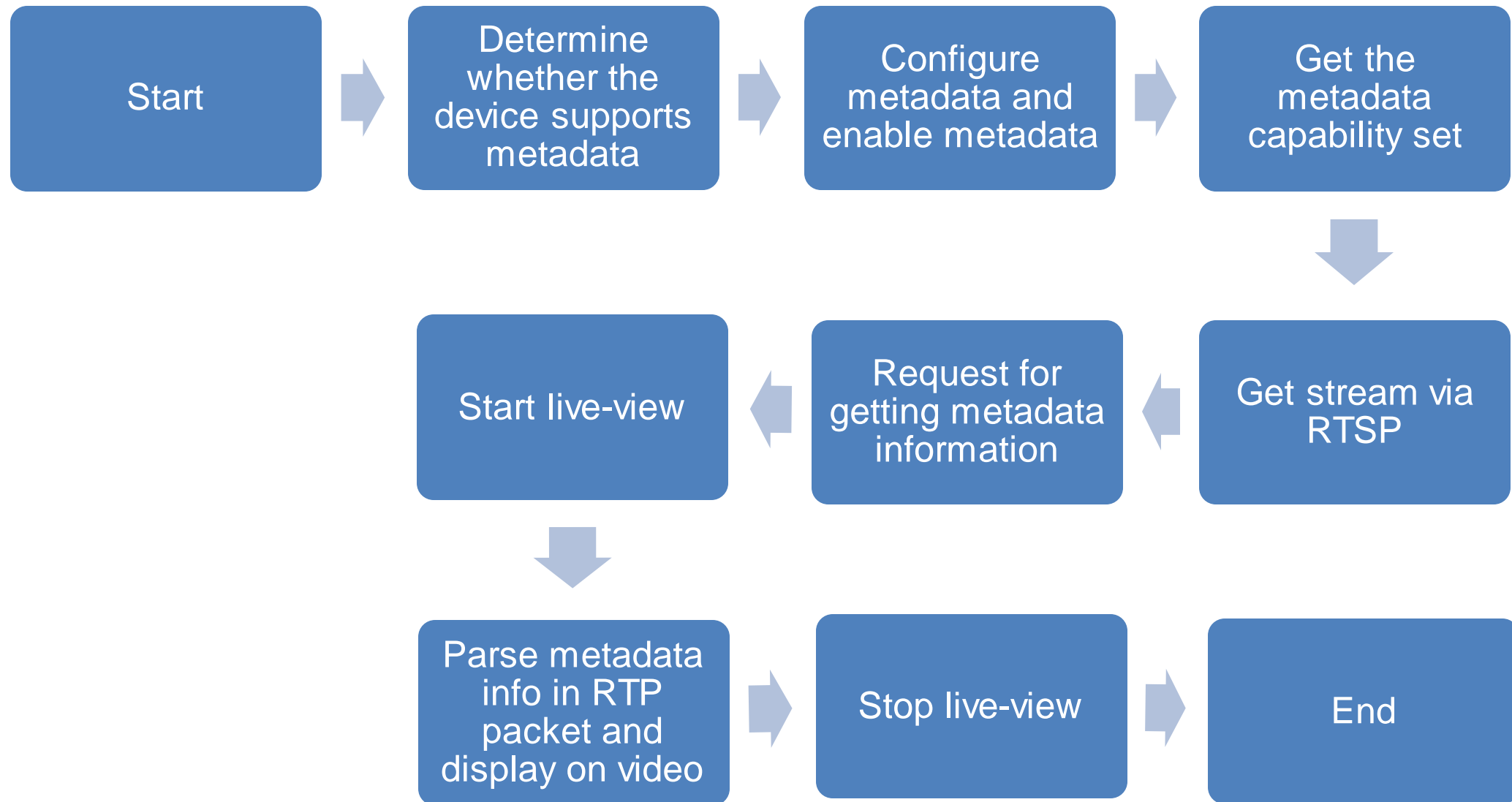
Metadata is the data that describes other data. In the video monitoring filed, metadata usually contains intelligent structured information (e.g., real-time temperature measurement, fire source detection, ship detection, behavior analysis, ANPR, queue management, and face capture) which can help users to understand the videos.



Integration method description

| | ISAPI | ONVIF |
|----------------------------------|---|---|
| HIK Products Coverage | Front-End / Thermal | Front-End / Thermal |
| Documents | OPEN ISAPI Protocol User Manual-Metadata Applications | Please refer to ONVIF official website |
| How to get integration materials | <ol style="list-style-type: none">1. Contact with regional technical support.2. Sign MLA with Hikvision and filling integration request form.3. Get dedicated Protocol documents. | Please refer to the ONVIF official website related metadata description for development |
| Key Features | Private VCA information, including Real-time temperature measurement, Fire detection, Ships detection and Behavior Analysis | Video analytics results |
| Description | HTTP+RTSP+XML | HTTP+RTSP+SOAP |

Metadata typical scenario



The current ISAPI Metadata message is in XML format.

◆ Features supported by Metadata:

- Real-time temperature measurement
- Fire detection
- Ships detection
- Behavior Analysis: Rule data and real-time target data

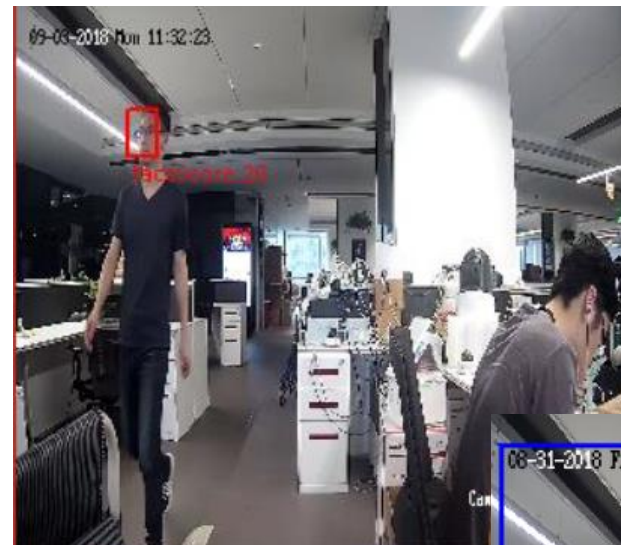
◆ Metadata supported configurations:

- Whether the device supports the Metadata capability set
- Metadata capability
- Metadata configuration

- ◆ IP camera
- 4/7-series ANPR



- 5/7-series



Recommend product

- ◆ Thermal camera
- 2/4/6/8-series



HIKVISION





ISAPI metadata Feature & Compatible list

| Protocol | Feature | ANPR | IPC | Thermal |
|----------|---|----------------------------------|------------------------------|---------------------------------|
| ISAPI | Real-time temperature measurement | Not support | Not support | 2 series – V5.5.0 and above |
| | | | | 4/6/8 series – V5.5.2 and above |
| | Fire detection | Not support | Not support | 2 series – V5.5.0 and above |
| | | | | 4/6/8 series – V5.5.2 and above |
| | Ships detection | Not support | Not support | 2 series – V5.5.0 and above |
| | | | | 4/6/8 series – V5.5.2 and above |
| | Behavior Analysis (Rule / Real-time target) | 4 series ANPR – V5.4.7 | 5 series – V5.5.80 and above | 2 series – V5.5.0 and above |
| | | 7 series ANPR– V5.5.62 and above | 7 series – V5.5.80 and above | 4/6/8 series – V5.5.2 and above |
| | ANPR | 4 series ANPR – V5.4.7 | Not support | Not support |
| | | 7 series ANPR– V5.5.62 and above | | |

ONVIF metadata Feature & Compatible list

| Protocol | Feature | ANPR | IPC | Thermal |
|----------|--------------------------------------|-------------|-------------------------------|-------------------------------|
| ONVIF | Real-time temperature measurement | Not support | Not support | Not support |
| | Fire detection | Not support | Not support | Not support |
| | Ships detection | Not support | Not support | Not support |
| | Behavior Analysis (analysis / event) | Not support | 5/7 series – V5.6.0 and above | 1/2 series - V5.5.8 and above |
| | ANPR | Not support | Not support | Not support |



HIKVISION

MANY THANKS !

First Choice for Security Professionals

www.hikvision.com