



HIKVISION EUROPE B.V.

How to Calibrate Radar and PTZ Camera

Product:	Radar :DS-PR1-60 DS-2DE7423IW-A
Publisher:	Emily
Version:	V.R2018/11/27
File:	IVMS-4200



Hikvision Europe B.V.

www.hikvision.com/europe

product.eu@hikvision.com

Purpose

Set the initial position of the speed dome to ensure the tracking accuracy.

Calibrate the linked PTZ camera to ensure high accuracy and better effect of target tracking.

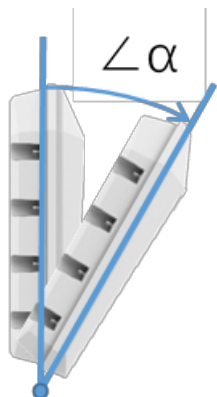
Preparation

1. Language of PTZ Camera, IVMS-4200 and the radar should match;
2. The recommended PTZ camera size is above 5-inch;
3. Two persons are needed to complete this calibration process;
4. When calibrating the camera, you'd better keep the chosen site empty.
5. Reference of installation height and adjusting angle of radar

radar installation height(m)	$\angle \alpha(^{\circ})$	Max. detecting distance: walking away from radar(m)	Max. detecting distance: walking towards radar(m)	Min. detecting distance: walking away from radar(m)	Min. detecting distance: walking towards radar(m)
1.5	0	59.5	59	5	1.91
1.5	3	59.54	59.2	3.38	1.98
1.5	6	59.74	59.4	3.66	1.87
1.5	9	58.7	52	3.82	2.3
1.5	12	53	32	5.6	2.24
2	0	59.41	59.4	5.47	1.8
2	3	58.9	59.4	4.39	2.19
2	6	58.7	59	4.34	1.72
2	9	58	59.62	5.1	2.2
2	12	50.12	39.1	4.47	2
3	0	59	58.4	6.74	4.62
3	3	59.4	59.6	6.08	4.21
3	6	59	59.51	6.7	3.42
3	9	59.3	58	5.8	2.9
3	12	59.51	47.6	5.2	3.1
3.5	0	59	57.17	10.08	5.5
3.5	3	59.3	59.5	8.75	3.9
3.5	6	59.6	58.51	7.1	3.86
3.5	9	58	56.25	7.9	3.8
3.5	12	53.53	46	6.92	3.45
4	0	59	58	11.68	7.36
4	3	59.2	59.4	10.3	5.7
4	6	58.3	58.5	9.89	5.6
4	9	58.5	59.79	9.3	4.4
4	12	58	53	8.86	4.63
5	3	58.66	58.6	13.1	9.6
5	6	58.6	59.7	12	7.62

*data is for reference only

recommended



According to statistics above:

1. Radar installation height of 2.5m is highly recommended to ensure the best quality of trajectory surveillance.
2. If the installation height is between 2.2 and 2.5m, there is no need to adjust the radar angle.
3. For installation height from 3m to 4m, we recommend adjusting the angle in order to reduce blind zone.

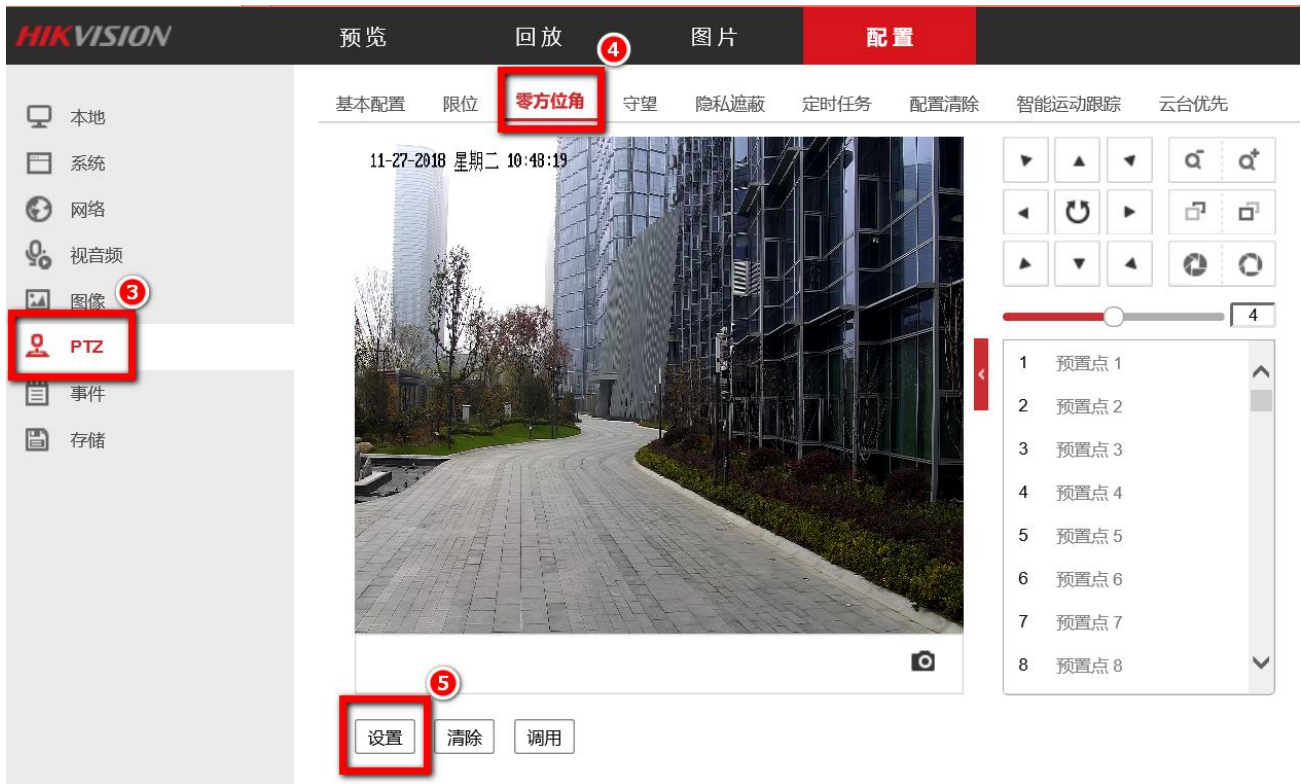
Steps

Set Initial position of PTZ camera


1. Select a reference object about 50m away from the speed dome, and select a point (on the reference object) whose altitude is the same as the speed dome's.
2. Enter the IP address of the speed dome in the web browser to enter the web client. Adjust the PTZ in the Live View page to make the point displayed in the frame.
3. Click 3D Zoom to middle the the point in the frame.

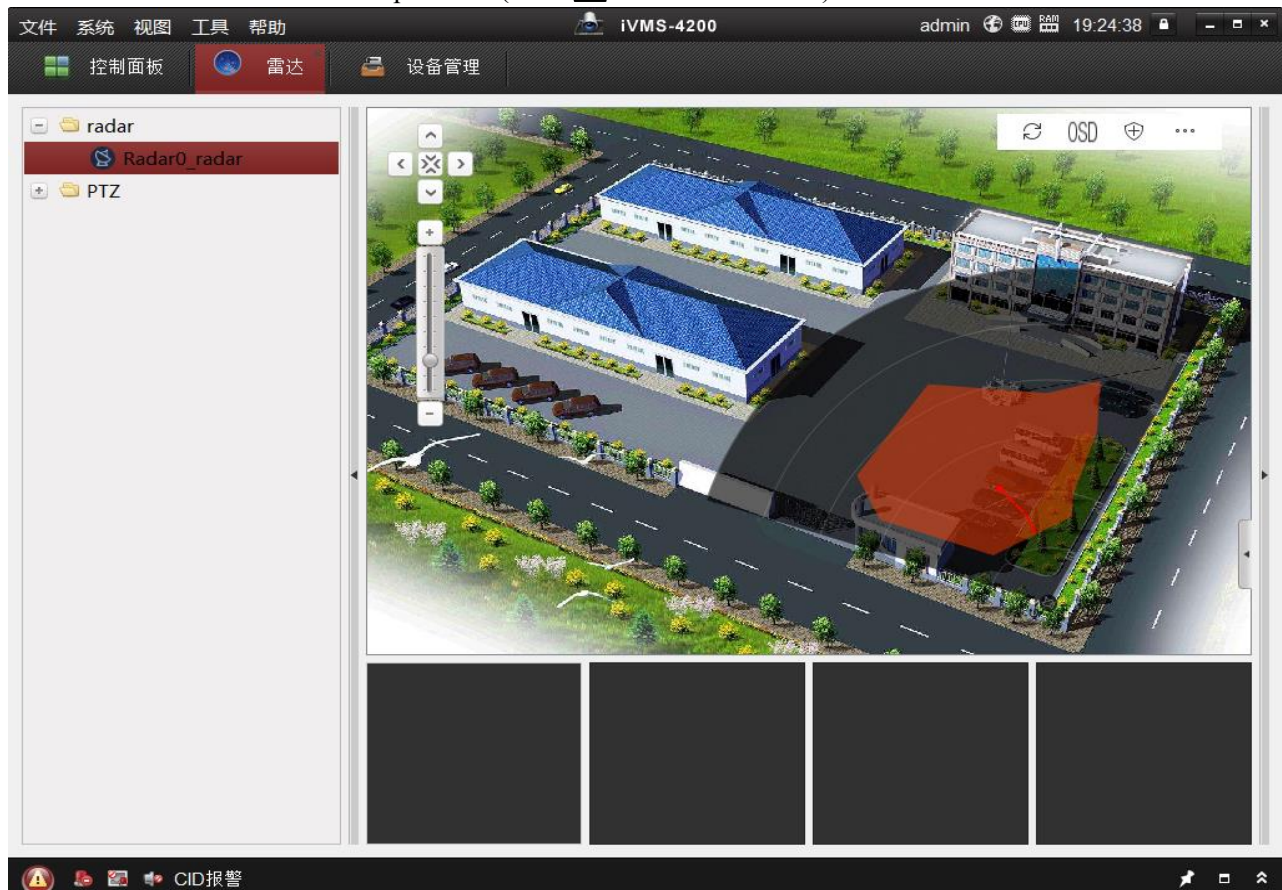


4. Enter the Configuration → PTZ → Initial Position page, and click Set to set the initial position.



Calibrate radar and PTZ camera

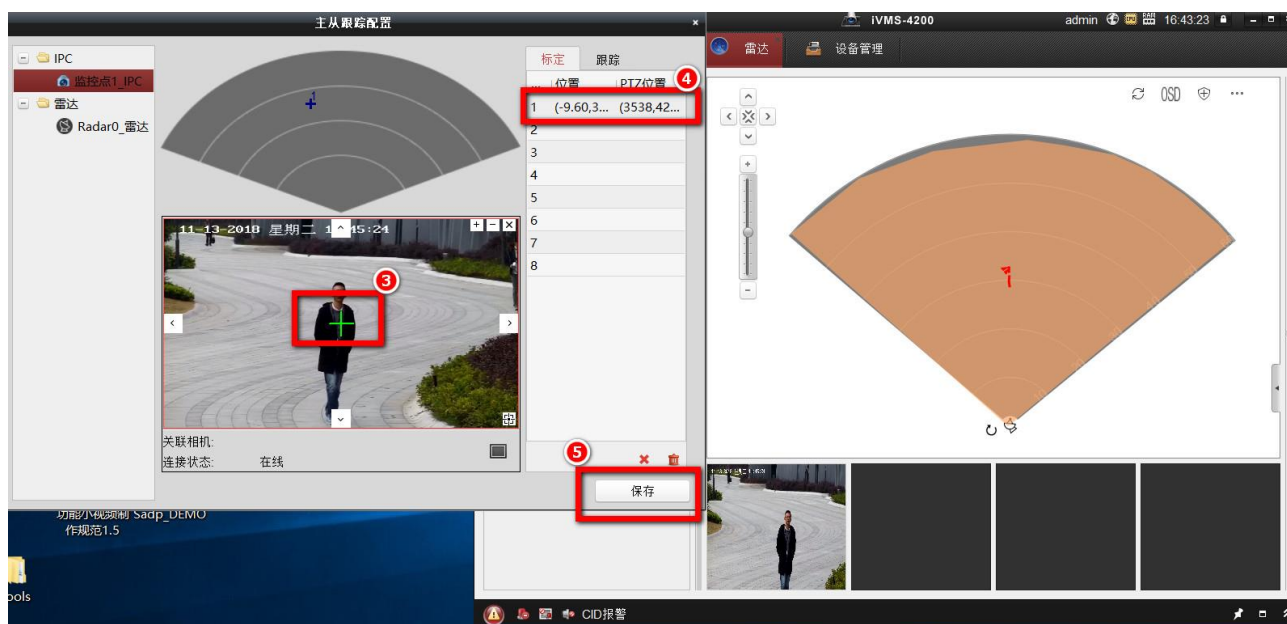
1. Disarm the radar before the operation. (Click  to disarm the radar)



2. Click to enter Master-Slave Tracking Settings.
3. First, double click the radar. Second, double click the linked camera in the device list on the left. (The sequence cannot be changed.) The real-time scene of the camera will be displayed under the radar field diagram.

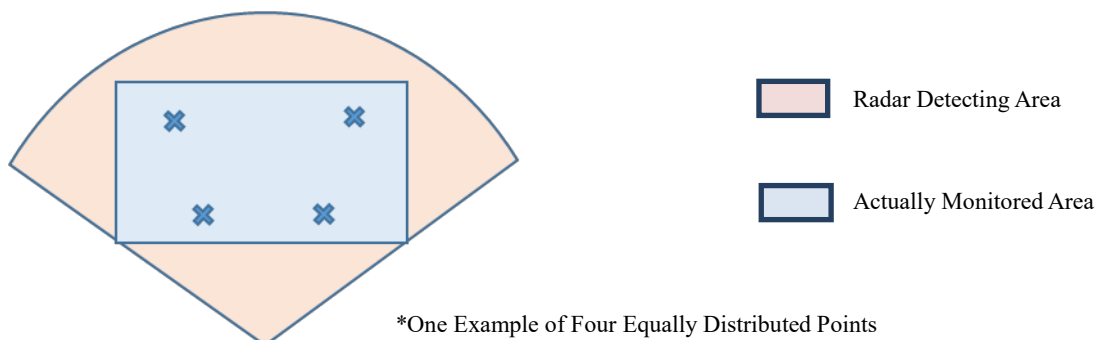


4. Then, we start the calibrate process.
 - 1) The calibration is a dynamic process. One person must move step by step into the detection area. When Person A is walking in the detection area, his trajectory will be presented in the real-time scene of the Radar.
 - 2) Then, person A could stop once there appears a relatively long trajectory. After that, you have only 10 seconds to calibrate the camera. After 10 seconds, if there is someone else walking into the detection area, the default calibration target will become another person and this calibration fails.
 - 3) You need to manually adjust the PTZ of the speed dome by clicking four arrows on the real-time image of PTZ camera. Person A should better take up vertically $\frac{2}{3}$ of the linked camera's real-time scene. In addition, in the horizontal direction, you'd better put the figure of person A in the middle of the image.
 - 4) Align the central sign + with the target in the scene. Focus the aim point on the center of the target person.
 - 5) Click the real-time scene of the linked camera and select a coordinate in the Calibration Position list on the right.
 - 6) Click "save".



Note

1. It is required to set at least four calibration points (equally distributed) if the speed dome is not installed together with the radar. But for speed dome installed together with the radar, only one calibration position is needed.



2. Under these situations, the calibration will fail:
 - ✓ No trajectory shows in the real-time scene of the radar;
 - ✓ Once person A stops and 10 seconds passed, meanwhile other persons are walking into the detection area, the process fails;
 - ✓ Disturbance from many other moving targets.

