

<b>Title:</b>	How to Connect a Door Station in Doorphone Mode to Indoor Station	<b>Version:</b>	v1.0	<b>Date:</b>	8/21/2018
<b>Product:</b>	Video Intercom			<b>Page:</b>	1 of 6

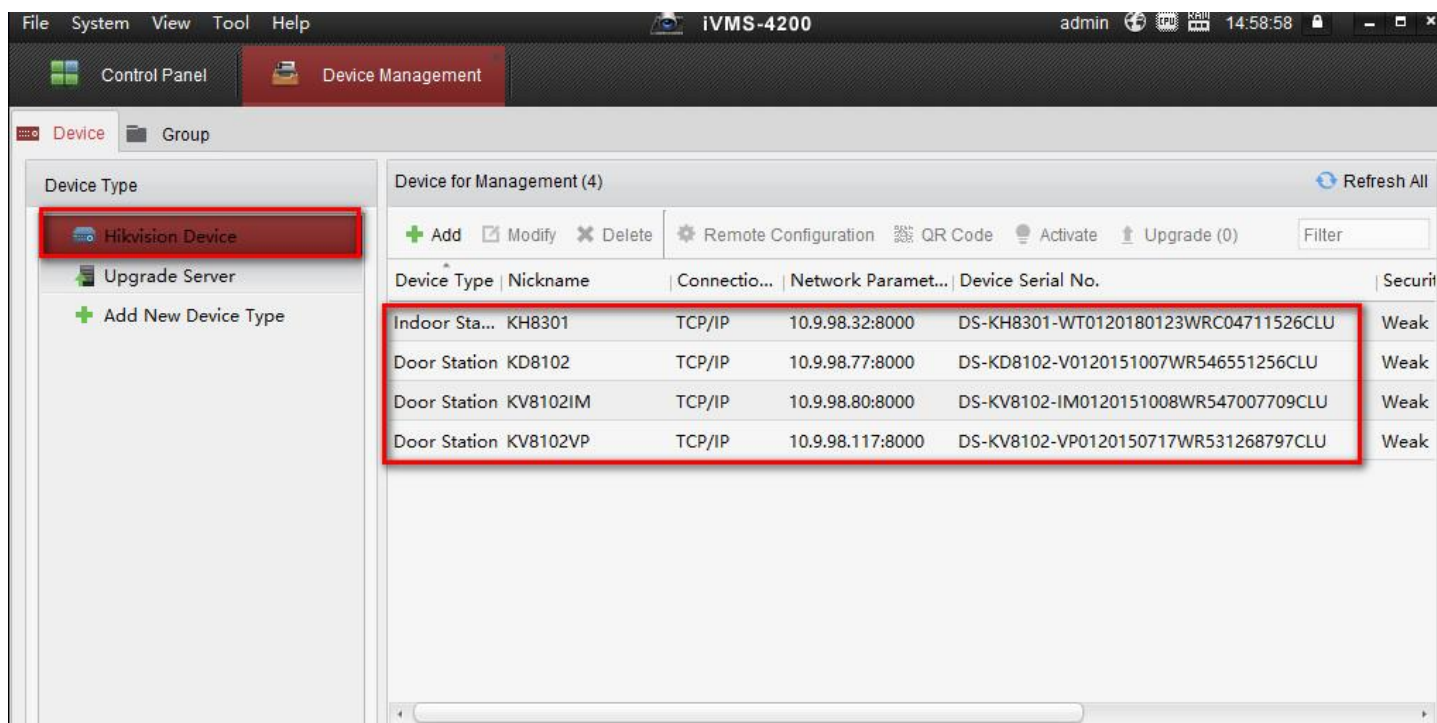
## Preparation

1. This guide is based on the V1.5.0 firmware. It takes three door stations (DS-KD8102 & DS-KV8102), one indoor station (DS-KH8301) as examples to introduce how to connect a door station in door phone mode to indoor station.
2. You are required to connect door station and indoor station, and make sure that door station can call indoor station normally before set doorphone mode.

## How to Connect a Door Station in Doorphone Mode to Indoor Station

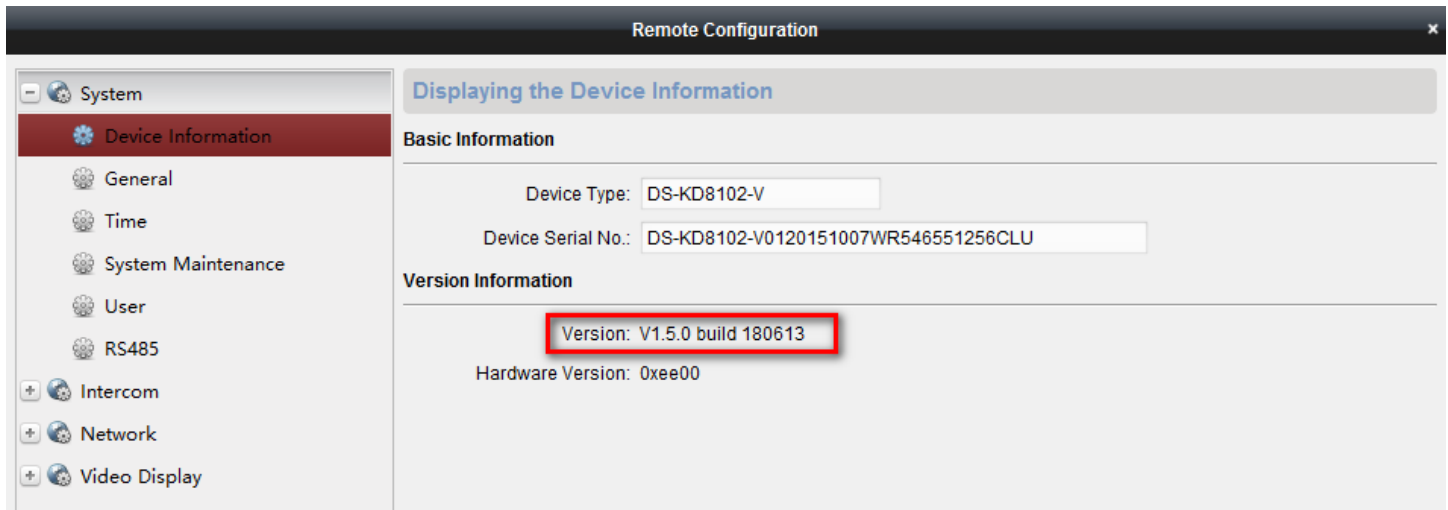
### Step 1: Add Devices to iVMS-4200

- 1) Go to **Device Management-> Add to Client** to add all devices to iVMS-4200 software.



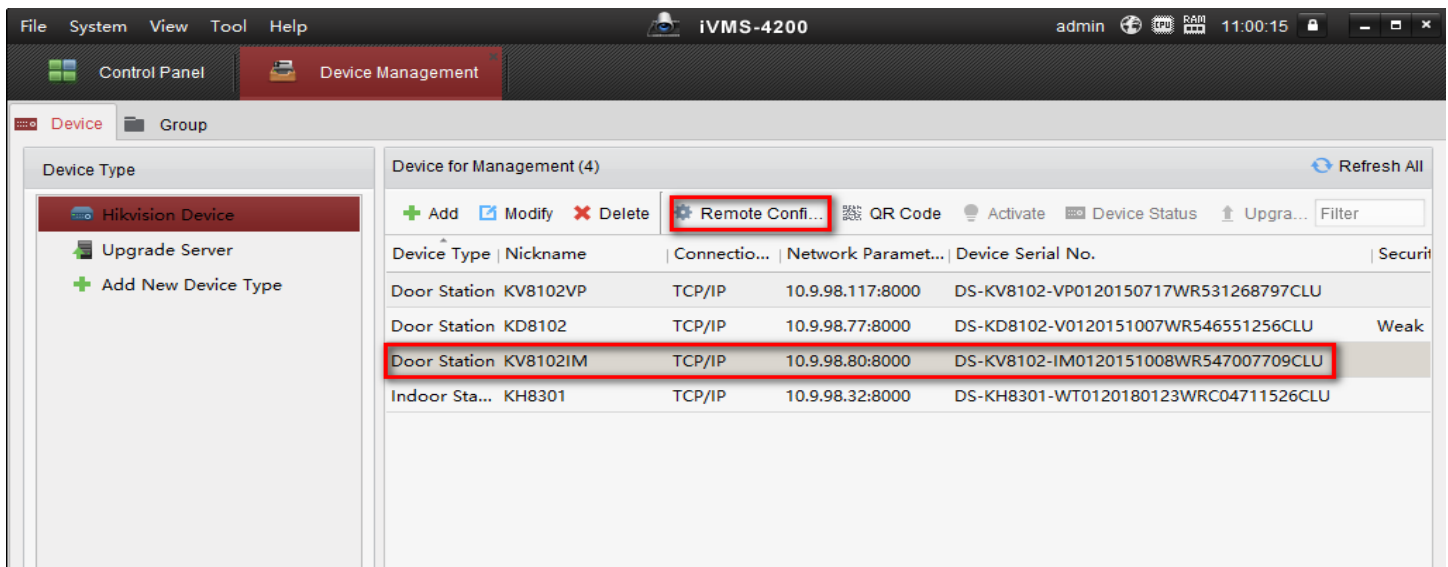
<b>Title:</b>	How to Connect a Door Station in Doorphone Mode to Indoor Station	<b>Version:</b>	v1.0	<b>Date:</b>	8/21/2018
<b>Product:</b>	Video Intercom			<b>Page:</b>	2 of 6

- 2) Check all devices in same firmware version V1.5.0 , if not please update device firmware and reset to factory settings from remote configuration first.



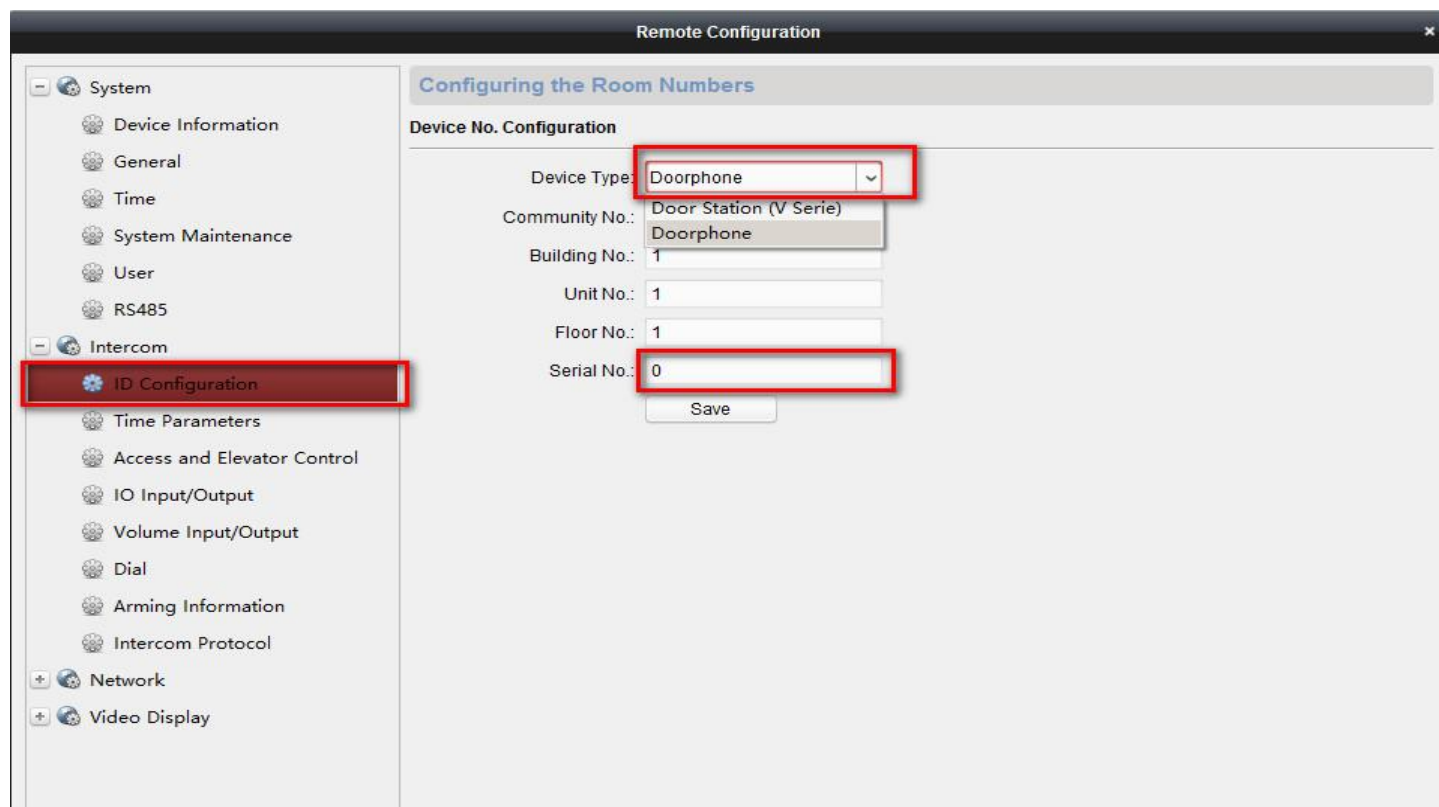
## Step 2: Set Doorphone Mode

- 1) Choose door station DS-KV8102IM, enter device remote configuration of door station.



<b>Title:</b>	How to Connect a Door Station in Doorphone Mode to Indoor Station	<b>Version:</b>	v1.0	<b>Date:</b>	8/21/2018
<b>Product:</b>	Video Intercom			<b>Page:</b>	3 of 6

- 2) Go to **Intercom-> ID Configuration**, modify device type to Doorphone mode. Door Station to Doorphone will cause device reboot.

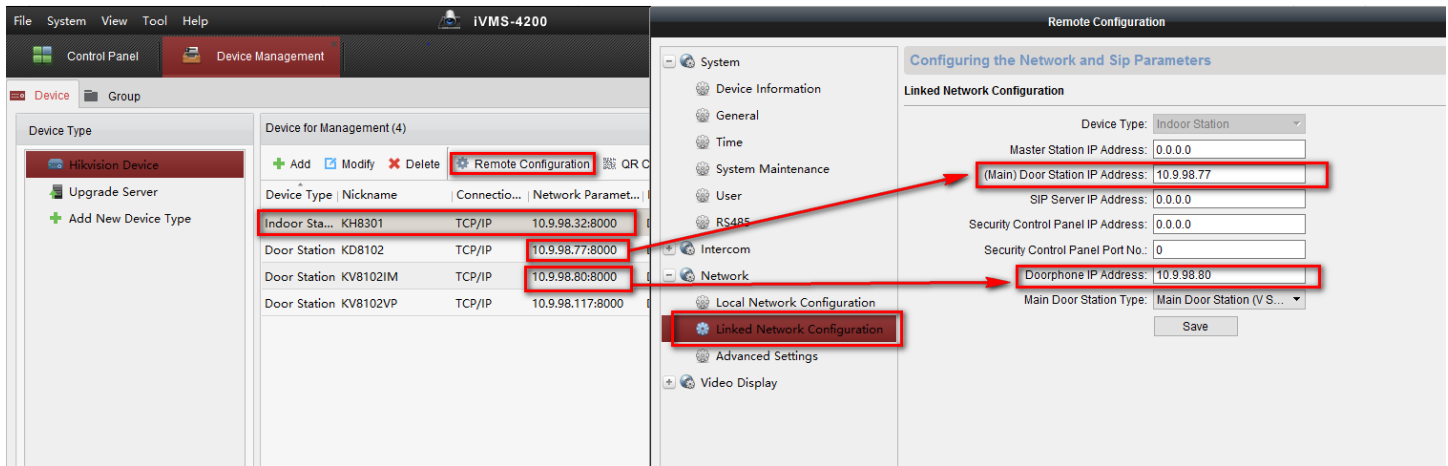


**Note:**

Serial No. ranges from 0~8. 0 represents doorphone while 1~8 represents sub doorphone.

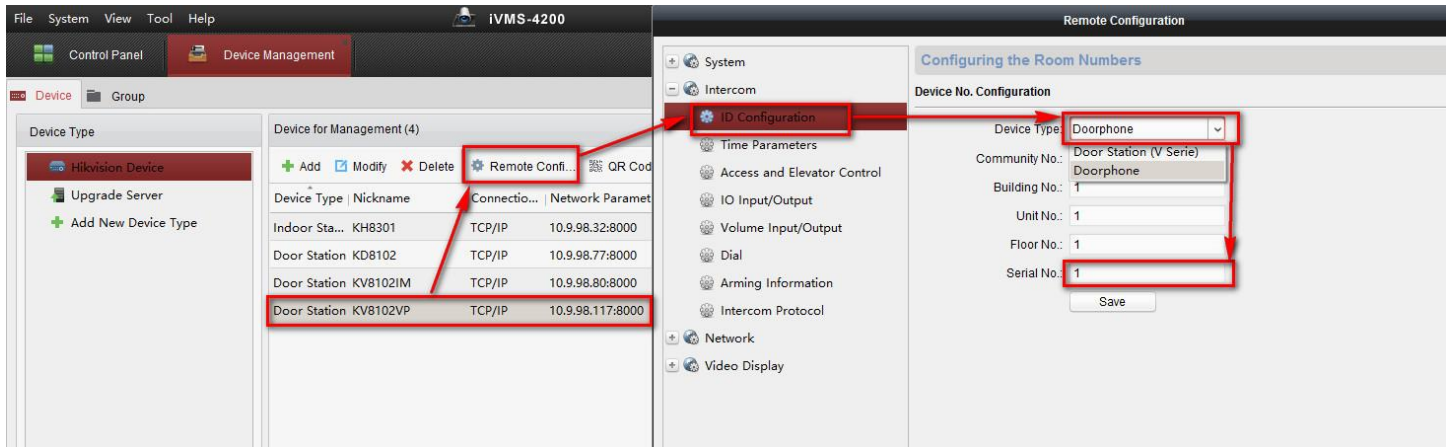
- 3) After device reboot, please select indoor station KH8301, go to **Remote Configuration-> Network-> Linked Network Configuration**, input door station (KD8102) IP address, doorphone (KV8102IM) IP address and click save.

<b>Title:</b>	How to Connect a Door Station in Doorphone Mode to Indoor Station	<b>Version:</b>	v1.0	<b>Date:</b>	8/21/2018
<b>Product:</b>	Video Intercom			<b>Page:</b>	4 of 6



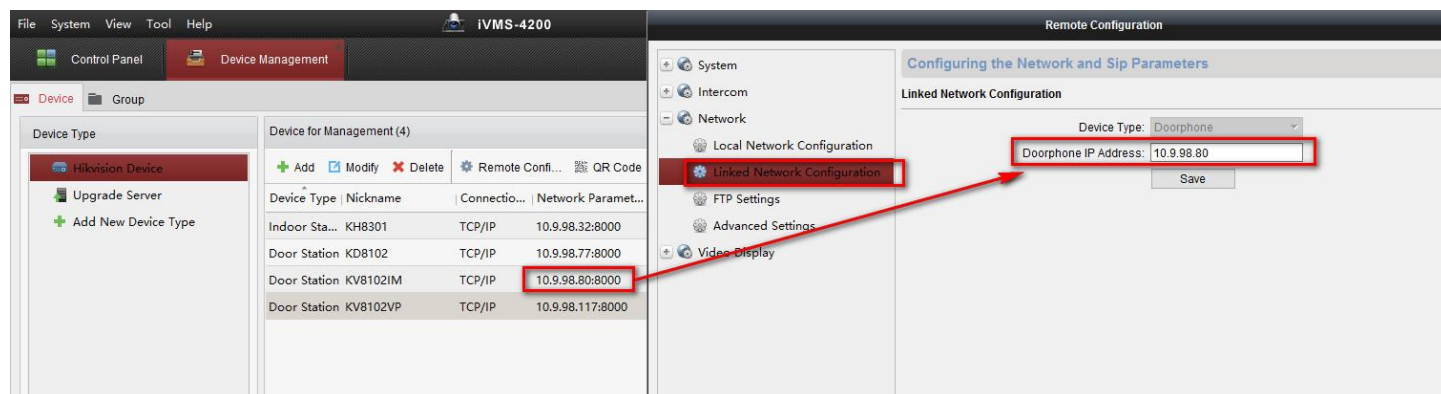
## Step 4: Set sub Doorphone.

- 1) Select door station DS-KV8102VP, enter device **Remote Configuration** of door station.
- 2) Go to **Intercom-> ID Configuration**, modify device type to Doorphone mode. Set a **Serial No.** ( range from 1~8 ). Door Station to sub Doorphone will cause device reboot.



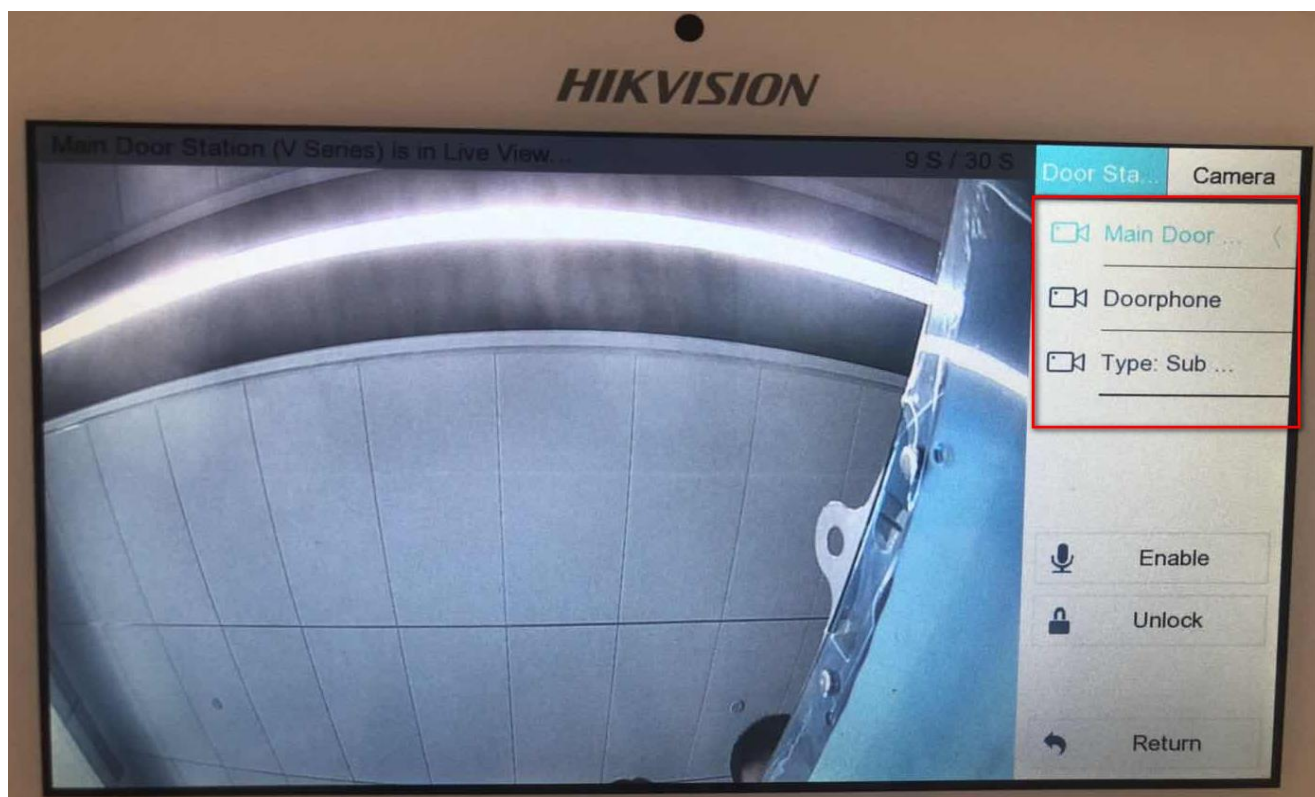
<b>Title:</b>	How to Connect a Door Station in Doorphone Mode to Indoor Station	<b>Version:</b>	v1.0	<b>Date:</b>	8/21/2018
<b>Product:</b>	Video Intercom			<b>Page:</b>	5 of 6

- 3) After device reboot, select sub doorphone (KV8102VP) , go to **Remote Configuration-> Network-> Linked Network Configuration**, input doorphone (KV8102IM) IP address and click save.



## Step 5: Make a Call Using Doorphone

Press the call button on doorphone or sub doorphone, then the indoor station will receive the call. Check live view from indoor station local, we can find main door station, doorphone and sub doorphone image.



<b>Title:</b>	How to Connect a Door Station in Doorphone Mode to Indoor Station	<b>Version:</b>	v1.0	<b>Date:</b>	8/21/2018
<b>Product:</b>	Video Intercom			<b>Page:</b>	6 of 6

## First Choice for Security Professionals

### HIKVISION Technical Support