

How to set up recording using HikVision's iVMS-4200 software.

We are starting under the assumption that you have already connected your camera to the network and have set it up correctly.

Firstly download and install the HikVision iVMS-4200. (Available here: <http://www.use-ip.co.uk/hikvision-ivms-4200-software.html>)

Once downloaded and set up, login into the iVMS software. From here click the icon at the top right of the screen which says 'Control Panel'.

On this screen click 'Device Management' under the 'Maintenance and Management' tab. Now click 'Server' to the top left of the screen.

Now if you have set you camera up correctly on your network it should appear at the bottom of the page.

Online Device (1)				
Refresh Every 15s				
<div> + Add to Client + Add All Modify Netinfo Restore Default Password </div>				
IP	Device Type	Port	Device Serial No.	Added
192.168.1.64	DS-2CD2432F-IW	8000	DS-2CD2432F-IW0120131106CCRR440090841	No

Select your camera and click 'Add to client'. This new window will appear, fill in the correct details and click 'add'.

Add

Adding Mode:

☒ IP/Domain
 ☐ IP Segment
 ☐ IP Server
 ☐ HIDDEN

☐ Add Offline Device

Nickname:

Address:

Port:

Name:

Password:

192.168.1.64

8000

☒ Export to group

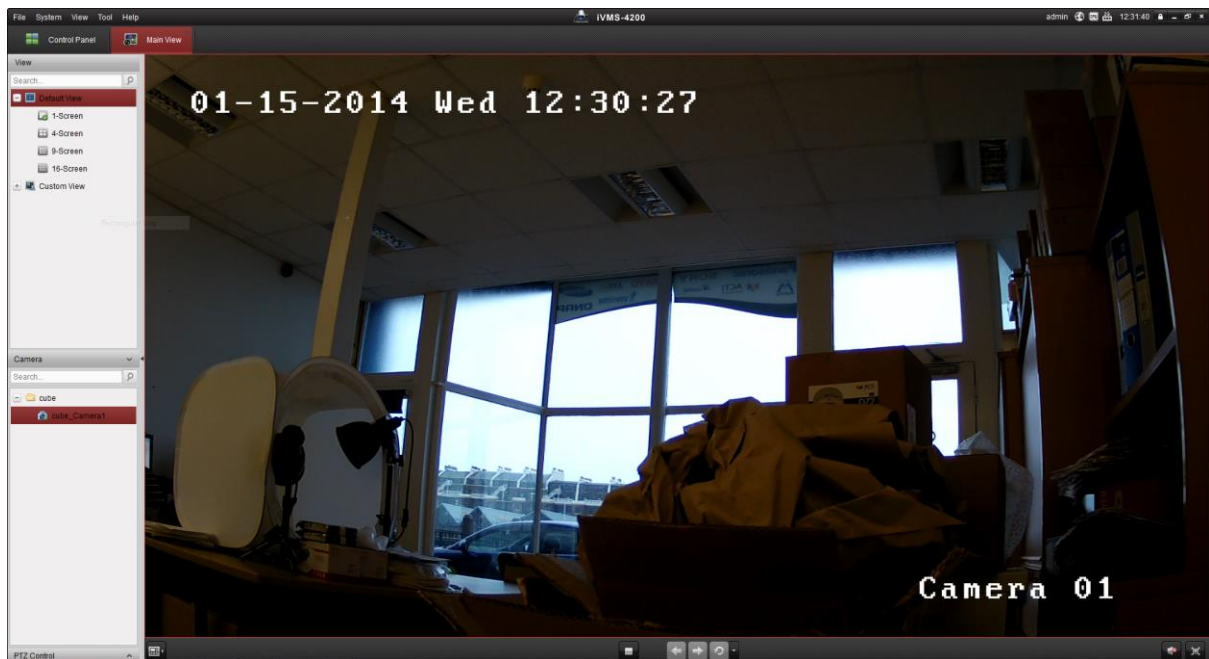
Set the device name as the group name and add all the channels connected to the device to the group.

Add

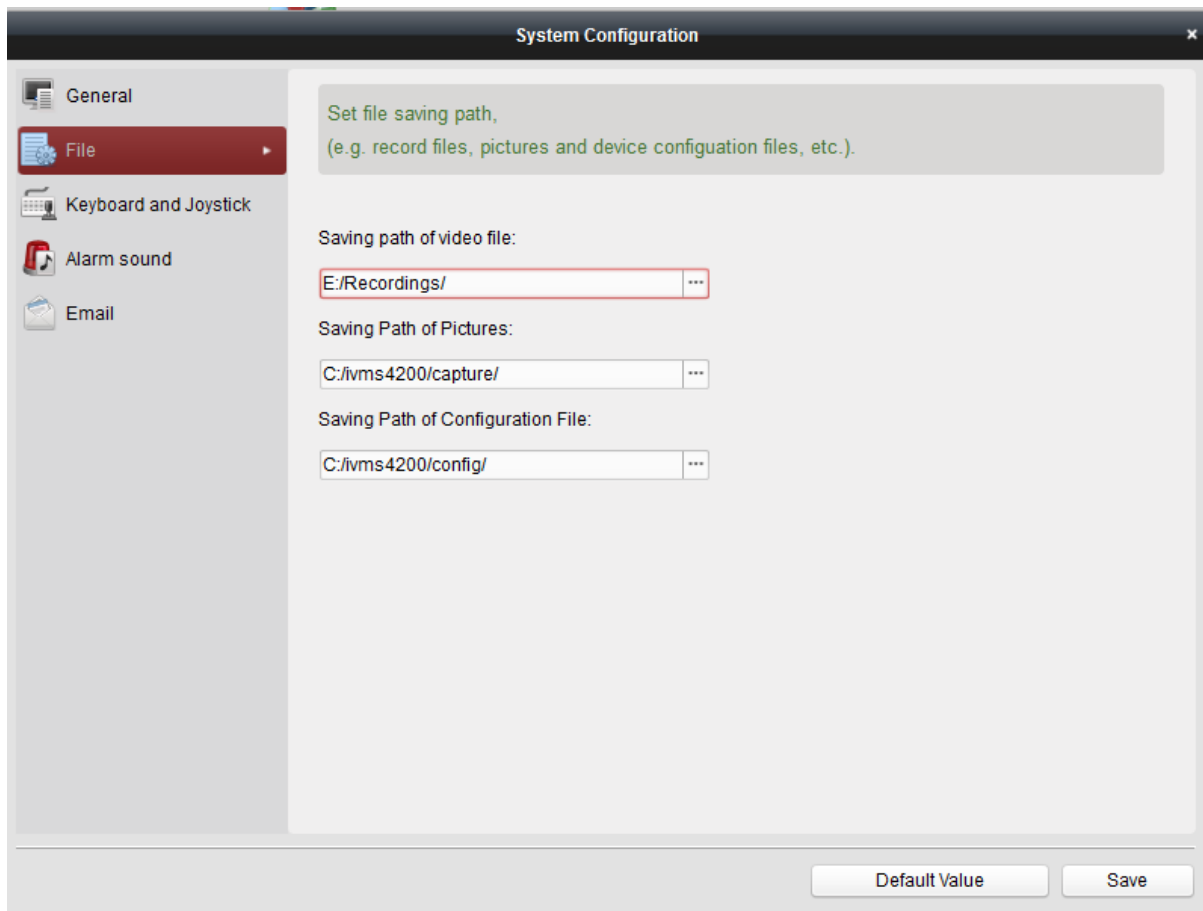
Cancel

Now to check that the camera has added correctly, along the top tabs there is one named 'Main View' click this. On this page in the left hand side under 'Camera' you should see your camera name,

drop and drop this onto the live view section. If the camera is connected correctly you will see a live view.

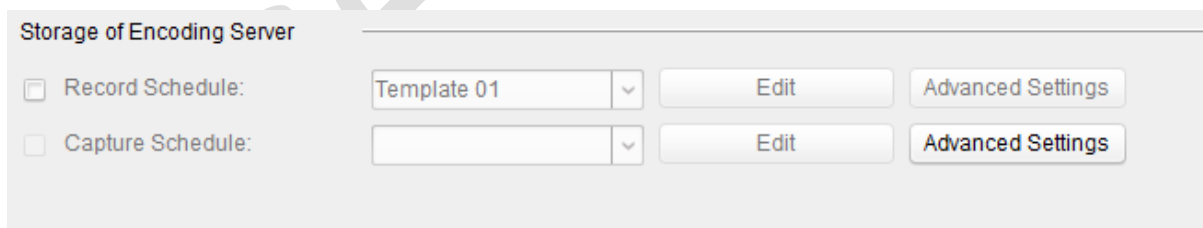


We now need to select where we want our recordings to save. Go back to the 'Control Panel' tab. Select the icon named 'System Configuration' under the 'Maintenance and Management' tab. A new window will open, click the 'File' icon tab to the left of the window. From here you can choose the saving path for video, pictures and configuration files.



Once you have selected the locations you want click 'Save' button in the bottom right of the screen.

Now go back to the 'Control Panel' tab. On this page click on 'Record Schedule' under 'Maintenance and Management'. From here in the left hand column select the camera you would like to edit the settings for.



Click the box next to 'Record Schedule' and make sure that the box is now ticked. Click the drop down menu that says 'Template 01' and select one from the list, or make a custom template. For this we will select 'All-day Template', you can edit each template by clicking on the 'edit' button. Now click the 'save' button in the top right of the screen.

Leave the system to run for about 10 minutes, then go to the 'Remote Playback' icon in the 'Control Panel' Screen. From here at the bottom left of the screen click the 'Camera' tab, select your camera from the list and drag and drop it into the playback screen. If all settings have been saved correctly it should start playing back recorded footage.